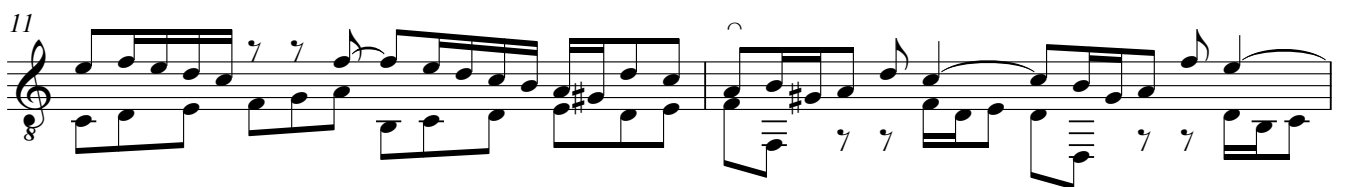
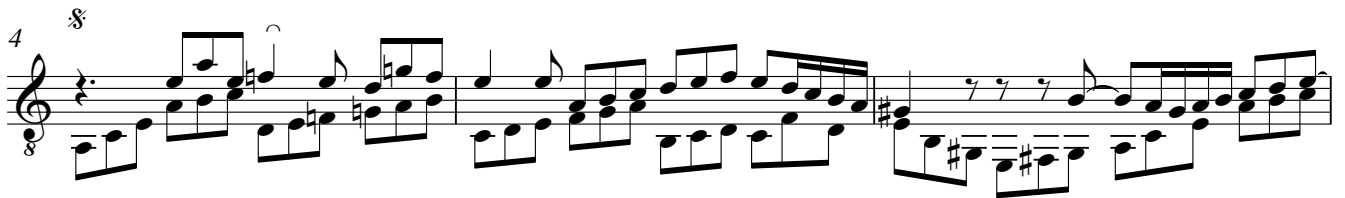
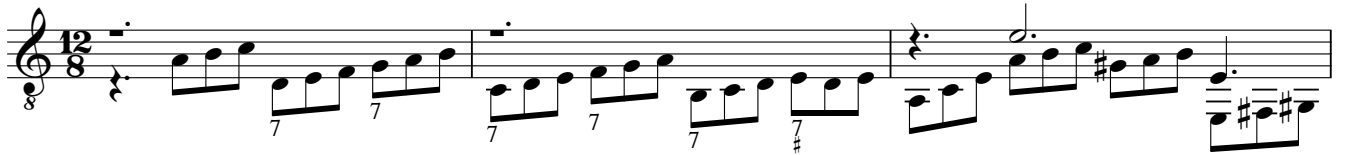


Höchster, mache deine Güte

ur "Jauchzet Gott in allen Landen"
BWV 51

J.S. Bach
Arr: K.W. Michelson



13

Musical notation for measures 13 and 14. Measure 13 features a treble clef, a key signature of one sharp (F#), and a common time signature (C). The melody consists of eighth and sixteenth notes, with a slur over the first two notes. The bass line includes a double bar line with a '7' below it, indicating a barre. Measure 14 continues the melodic line with similar rhythmic patterns and includes another '7' below the bass line.

15

Musical notation for measures 15 and 16. Measure 15 has a treble clef and a key signature of one sharp. The melody is more complex, featuring sixteenth-note runs and a slur. The bass line has a double bar line with '(8) (8) (8)' below it, indicating triplets. Measure 16 continues with a treble clef, a key signature of one sharp, and a common time signature. The bass line has a double bar line with '7' below it.

17

Musical notation for measures 17 and 18. Measure 17 has a treble clef and a key signature of one sharp. The melody starts with a whole rest, followed by eighth notes. The bass line has a double bar line with '7' below it. Measure 18 continues with a treble clef, a key signature of one sharp, and a common time signature. The bass line has a double bar line with '7' below it.

20

Musical notation for measures 20 and 21. Measure 20 has a treble clef and a key signature of one sharp. The melody includes a trill (tr) over a note. The bass line has a double bar line with '7' below it. Measure 21 continues with a treble clef, a key signature of one sharp, and a common time signature. The bass line has a double bar line with '7' below it.

22

Musical notation for measures 22 and 23. Measure 22 has a treble clef and a key signature of one sharp. The melody is a continuous sixteenth-note run. The bass line has a double bar line with '7' below it. Measure 23 continues with a treble clef, a key signature of one sharp, and a common time signature. The bass line has a double bar line with '7' below it.

24

Musical notation for measures 24 and 25. Measure 24 has a treble clef and a key signature of one sharp. The melody includes a trill (tr) over a note. The bass line has a double bar line with '7' below it. Measure 25 continues with a treble clef, a key signature of one sharp, and a common time signature. The bass line has a double bar line with '7' below it.

27 *tr*

29 *tr*

31

34

36